

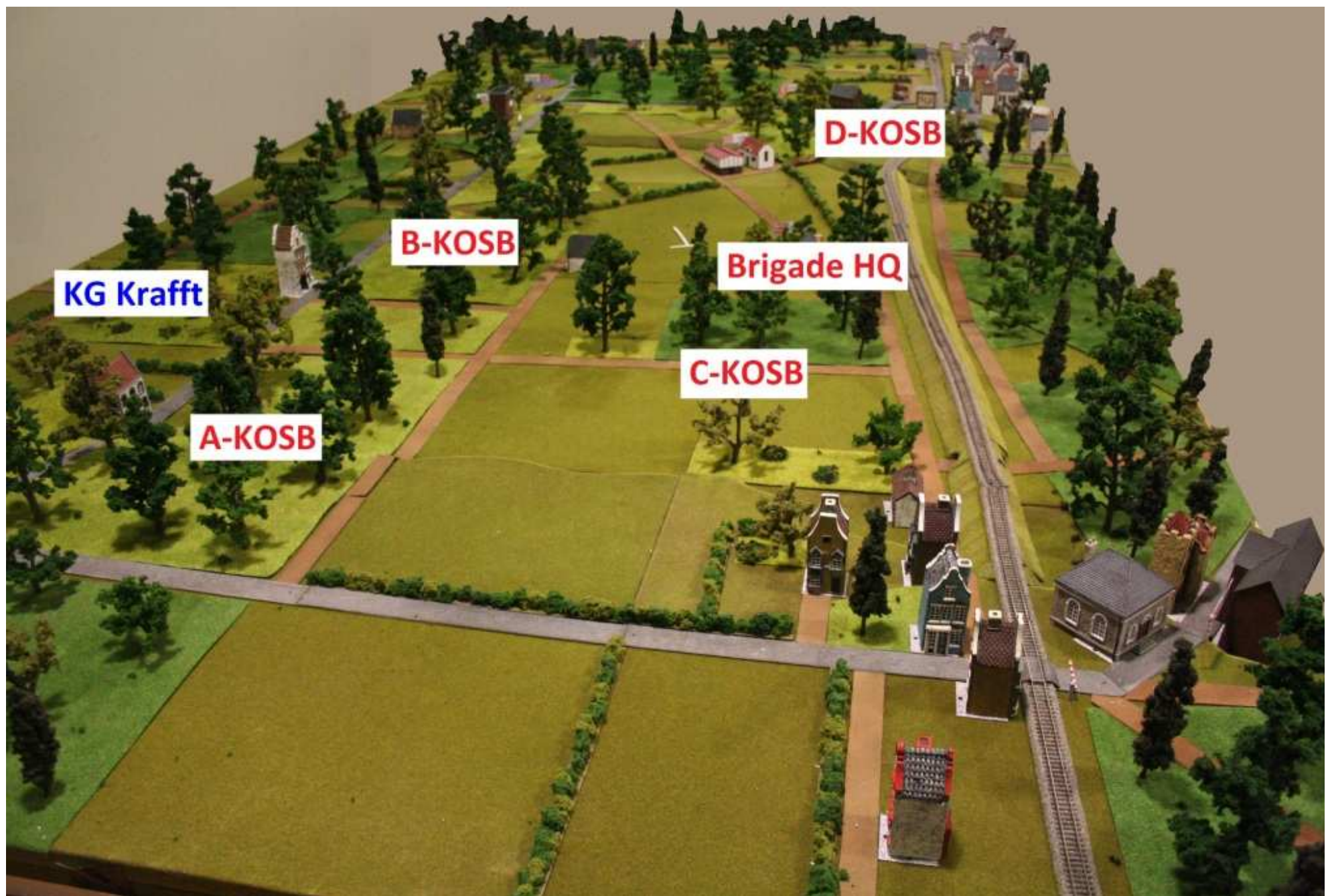
Right. Here goes.....

This scenario takes place on day 3 of the Arnhem battle. This turned out to be the pivotal day for the operation as it was the final chance for the British Paras to break through to Frost's troops isolated at Arnhem Bridge. This scenario focuses on the attempt by Brigadier Hackett's 4th Parachute Brigade to break through a German blocking line on the Dreijenseweg, whilst also keeping LZ-L secure for the imminent arrival of the Polish gliders of the 3rd Lift. The German forces are composed of several ad-hoc Kampfgruppe and receive a steady stream of reinforcements as the game progresses, ready to launch their attack on the landing-zone



Played on a 12' x 6' table, LZ-L is at the centre and is ringed with woods. The Dreijenseweg runs north out of Oosterbeek to meet the Amsterdamsweg close to the "Pumping Station". The railway is a prominent feature with large sections on embankments or in cuttings, both of which hinder troop movement





The west end of the table. KOSB, a strong Airlanding Battalion, are tasked with defending LZ-L. A and B Company take position in the woodland between LZ-L and the Amsterdamsweg. C Company is held as Brigade reserve. D Company is detached for an attacking role





Looking at the east end of the table, 10 Para aim to take the Pumping Station and the area north of the Amsterdamseweg. In the centre, 156 Para aim to launch a direct attack across the Dreijenseweg. In the south, D-KOSB join with a squadron of Glider Pilots and a squadron of Engineers. This powerful force aims to move along the line of the railway and take control of the north of Oosterbeek





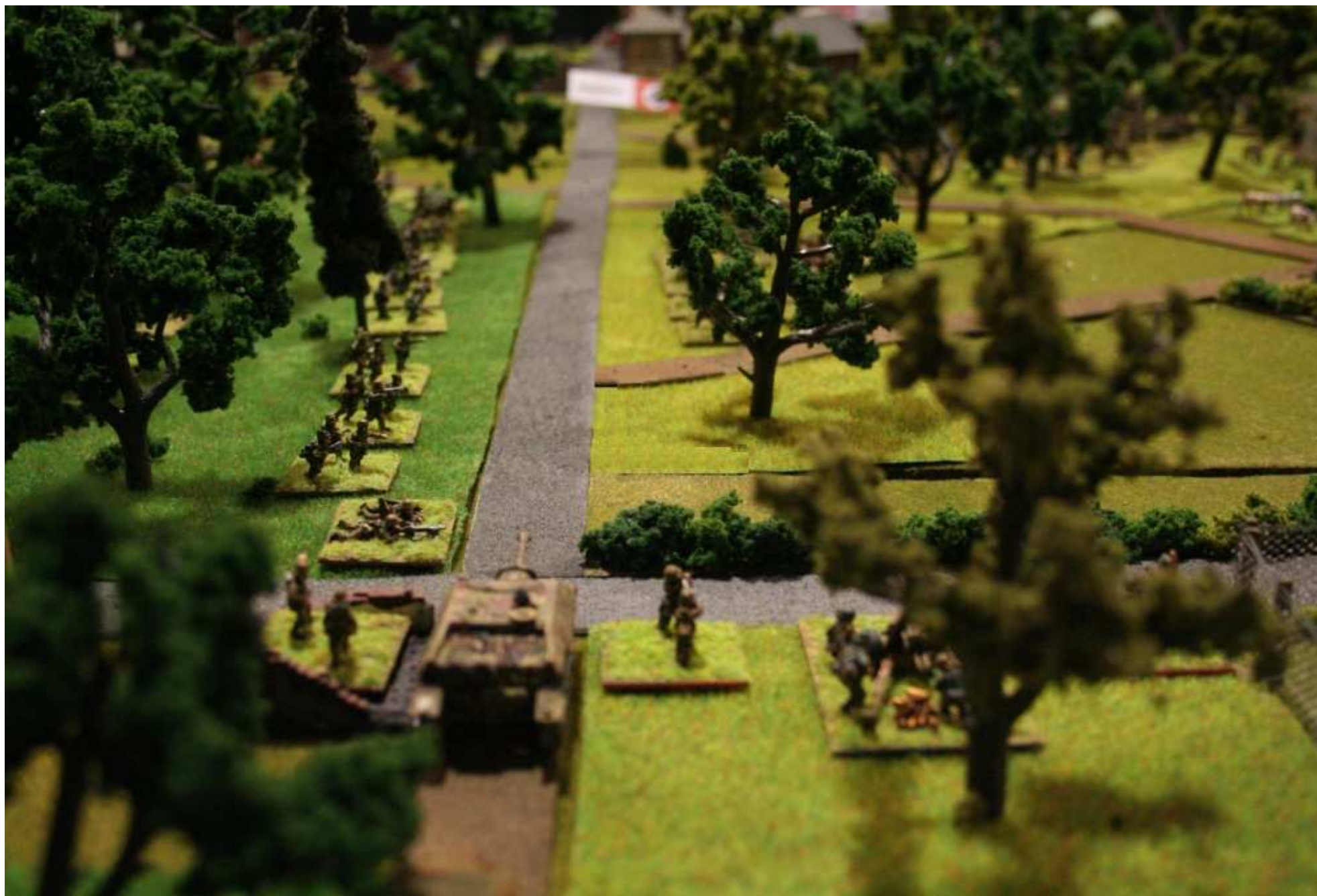
The calm before the storm. LZ-L, next to the Johannhoeve Farm at the centre of the table, ringed by woodland





At the south end of the Dreijenseweg, KG Bruhns, (a Wehrmacht Panzer-Grenadier training battalion) uses SdKfz 250's to strengthen defensive positions





KG Allworden is from the 9SS Panzer-Jäger battalion. Some troops are fighting as infantry but a solitary Panzer-Jäger IV takes up a dominating position next to the Pumping Station. Further down the Dreijensweg, KG Spindler (soldiers from 9SS Artillery Regiment) form a blocking line in the woods.





The attack gets underway. The mixed force of Engineers, Glider Pilots and D-KOSB move along the railway line towards the railway cutting at Oosterbeek. The smoke behind the trees in the centre mark where A-156 Para are starting their attack across the Dreijenseweg





To the north, B-156 Para form up for their attack. 10 Para's first objective is the Pumping Station. A-10 Para cross the exposed Amsterdamseweg to launch a flank attack on the Pumping Station.





Urged on by an impatient Brigadier Hackett, A-156 Para emerge from their smoke-screen to close assault KG Spindler's blocking line at the Dreijenseweg





Para Engineers, supported by D-KOSB, are quickly in contact with KG Bruhns' Panzer-Grenadiers and secure the railway crossing at the south end of the Dreijenseweg. Moving along the railway cutting, they threaten to outflank the German blocking line.





Meanwhile, at other end of the Dreijenseweg, 10 Para launch an attack against KG Allworden's SS troops in the Pumping Station





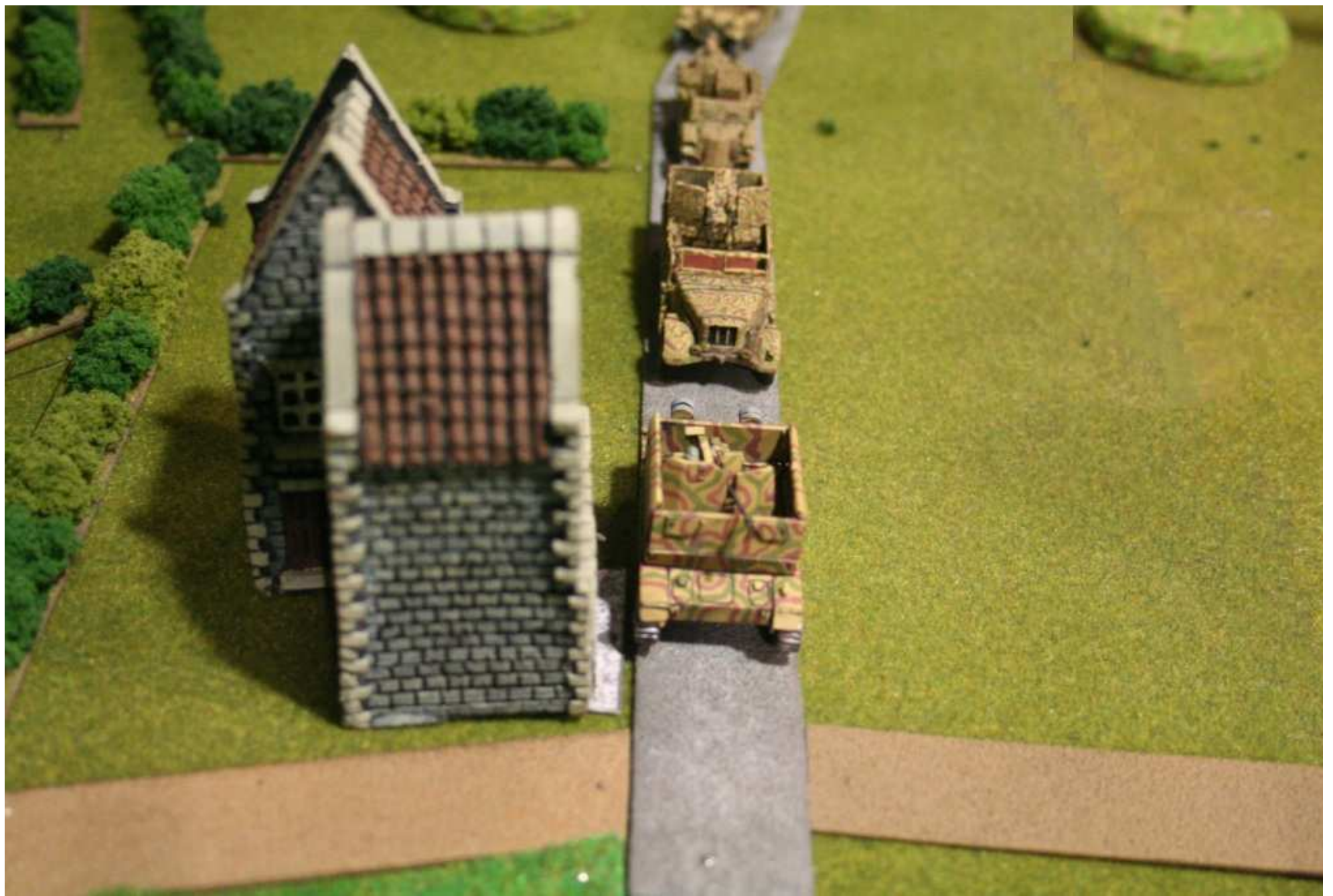
156 Para consolidate their position at the southern end of the Dreijenseweg, bringing in a fresh company to continue the momentum of the advance The German line is dangerously thin with just a few unit manning positions on the hedge line. One more assault from 156 Para should carry the position





The Pumping Station falls to 10 Para and they continue their advance through the surrounding woods. The Panzer-Jäger IV stalks the lanes but cannot risk a battle in the woodland





Just as the German positions threaten to give way, elements of 9SS Flak Battalion, including a Möbelwagen, arrive to bolster the strained defences





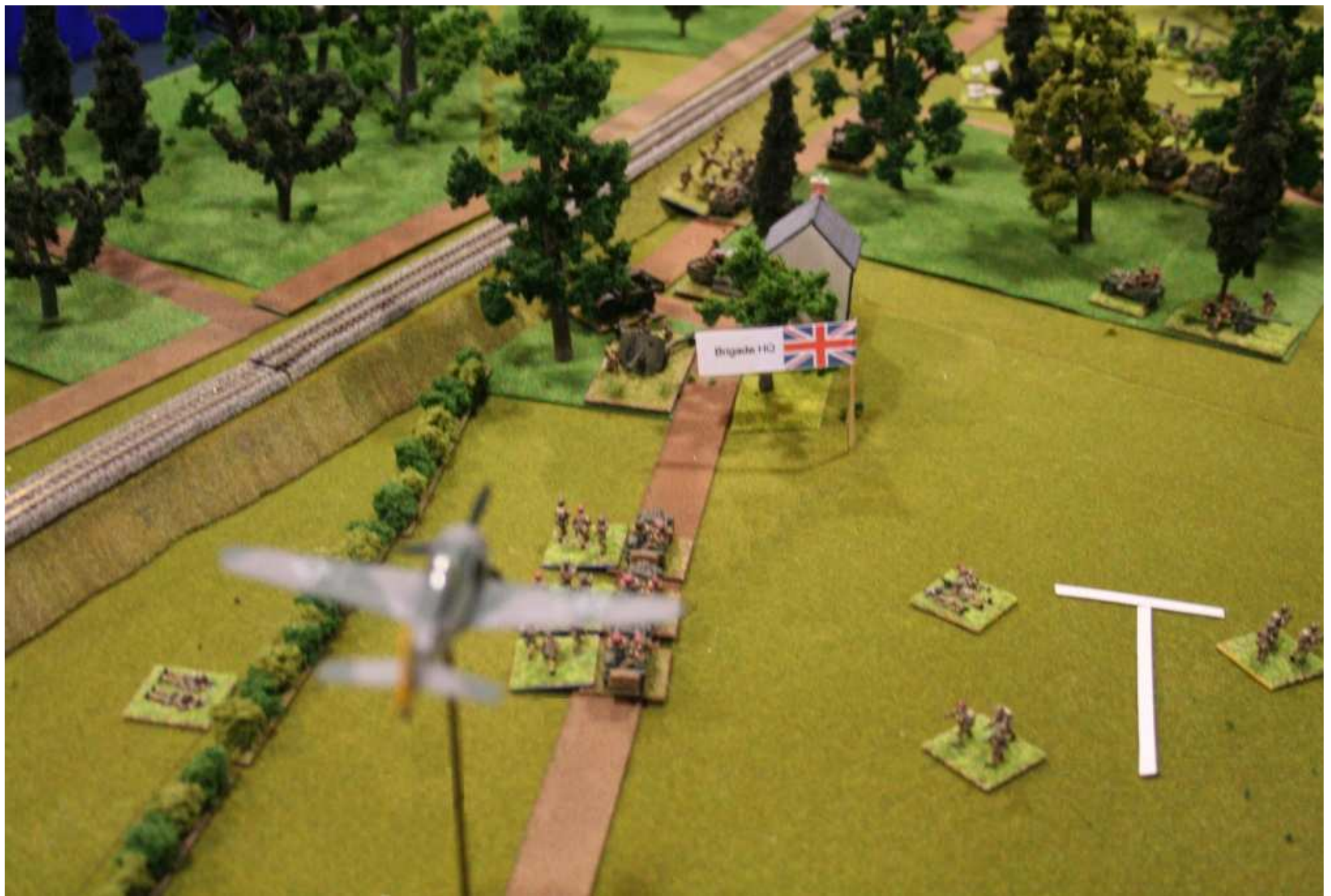
Although 156 Para now dominate the Dreijenseweg, the Flak units add strength to the German second line of defence. Marauding Luftwaffe fighters are looking for targets





Ominous developments in the previously quiet area along the north of the board. B-KOSB report significant troop movements in the woods across the Amsterdamseweg





With precious few reserves left, Hackett calls on the KOSB Recce platoon to investigate. But as they pass 21st Independent Company setting up the beacons for the 3rd lift, they are attacked by a FW-190, taking serious losses





The high water-mark of the advance at Oosterbeek. The Engineers and D-KOSB dominate the railway cutting at Oosterbeek but reinforcements and Flak units close the door on any opportunity to turn the southern flank of the German defensive line.





Chaos erupts at Brigade HQ. Hackett has sent his only reserve, C-KOSB, to help hold back any German attack from the north. The glider landing is imminent. Then orders come from Division to withdraw with immediate effect south of the railway. A serious defeat of the forces in the town makes Hackett position north of the railway untenable





The drone of engines fills the air as the 3rd lift appears. The Dakotas release their gliders and pull away





As the gliders start to land, A-KOSB and B-KOSB are starting to fight an increasingly desperate battle in the woods north of LZ-L. KG Krafft's counter-attack gathers momentum. In the distance, 10 Para and 156 Para start to pull-back from their hard-won positions at the Pumping Station and across the Dreijenseweg





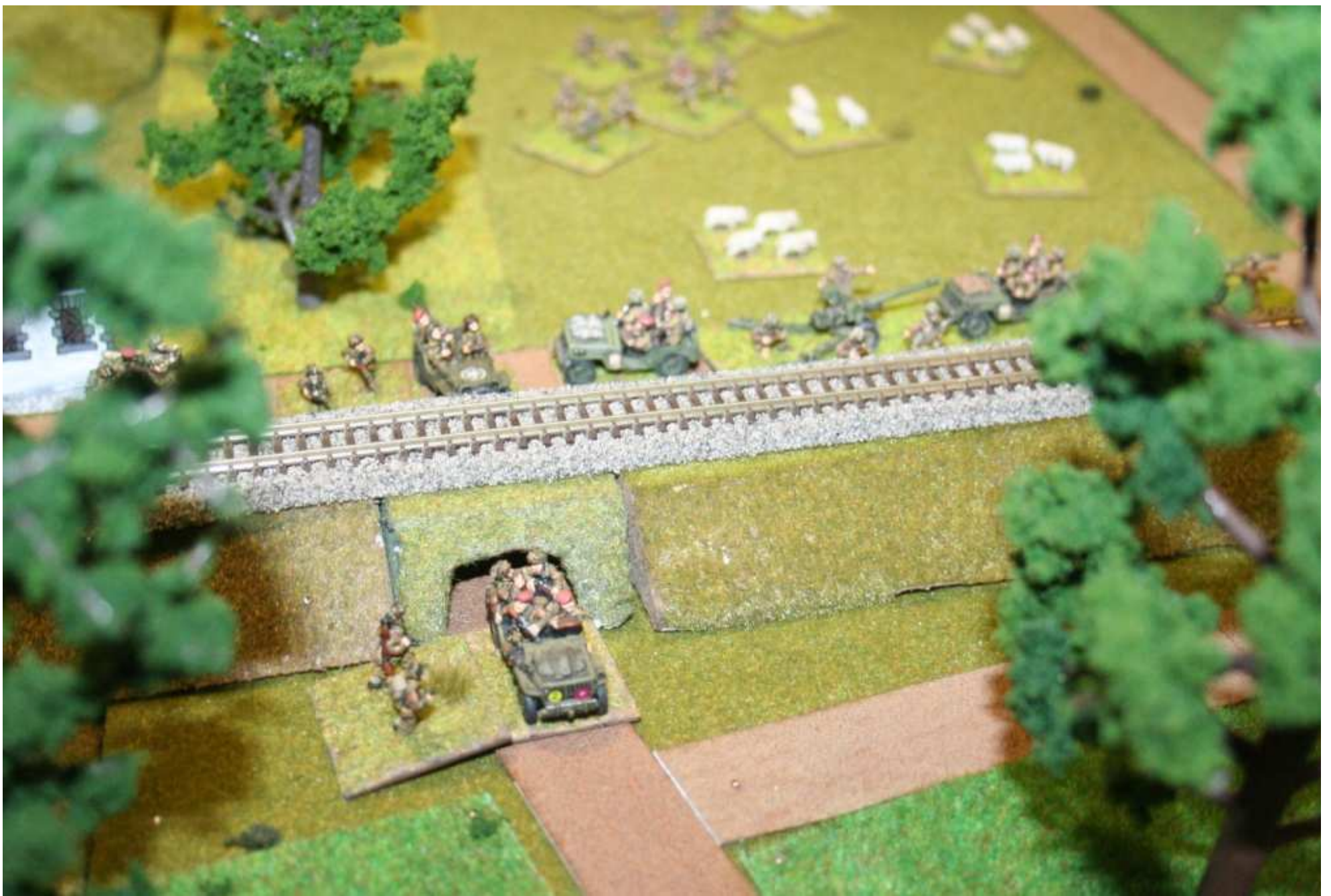
The landing is reasonably successful but as the Polish antitank guns are finishing unloading, German units are already moving out of the woods onto LZ-L





D-10 Para conduct a fighting withdrawal down the Dreijenseweg harassed by KG Allworden. But the Panzer-Jäger IV pays the price for straying too close to the enemy in woodland and is destroyed in a close assault.





The railway embankment proves to be an impassable obstacle for Jeeps towing ATG's. But the discovery of a drainage culvert large enough for Jeeps allows KOSB's ATG's to make their escape





Other units, including the Brigade 17-pdrs, cross the railway into the Oosterbeek perimeter





After receiving further reinforcements, KG Bruhns, supported by Flak units, puts pressure on 156 Para as they withdraw towards the railway crossing at Oosterbeek





Not all ATG's have been withdrawn, some remain to cover the retreat. The Möbelwagen and a SdKfz 250 fall victim in quick succession





The Glider Pilot Squadron, across the railway in northern Oosterbeek, comes under heavy attack by KG Bruhns but holds its ground





At the other end of the table, a RASC platoon from Brigade HQ had been tasked with keeping the Wolfheze level-crossing open. Despite coming under attack from a whole company, they hold their position and allow more units to escape south of the railway



The result was a marginal victory for the British. Possession of the railway crossing at the south end of the Dreijenseweg allowed a more ordered withdrawal south of the railway into the forming Oosterbeek perimeter.