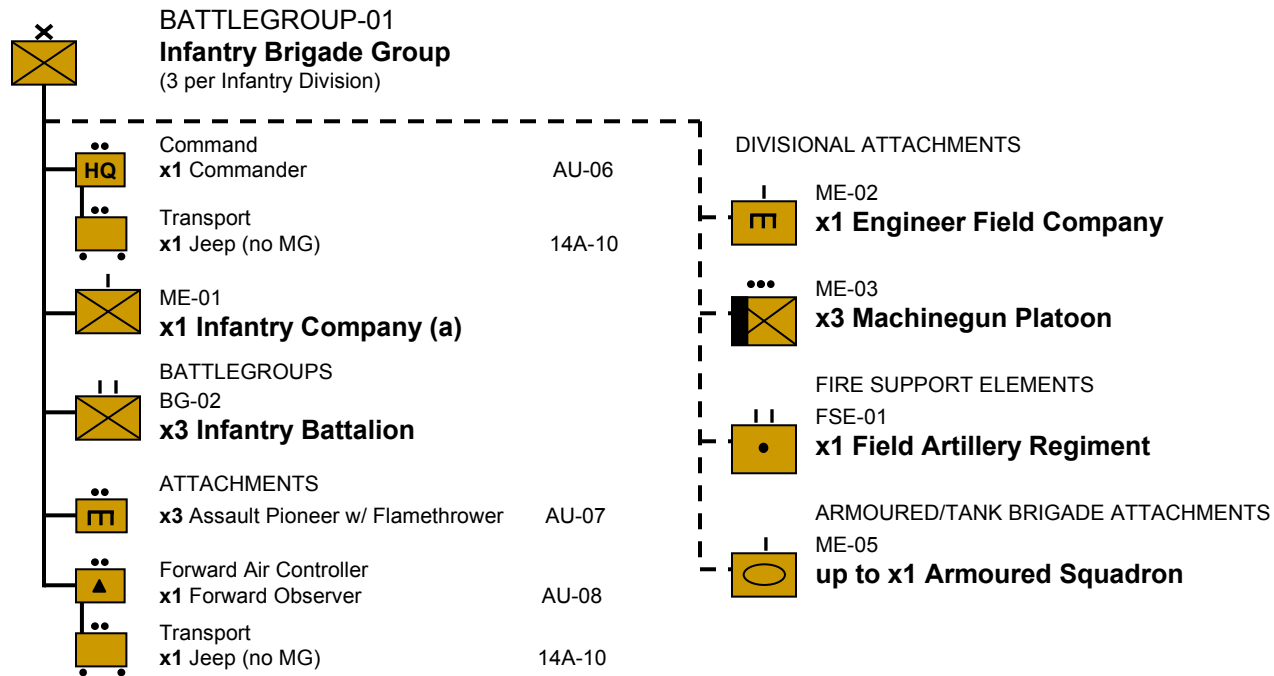
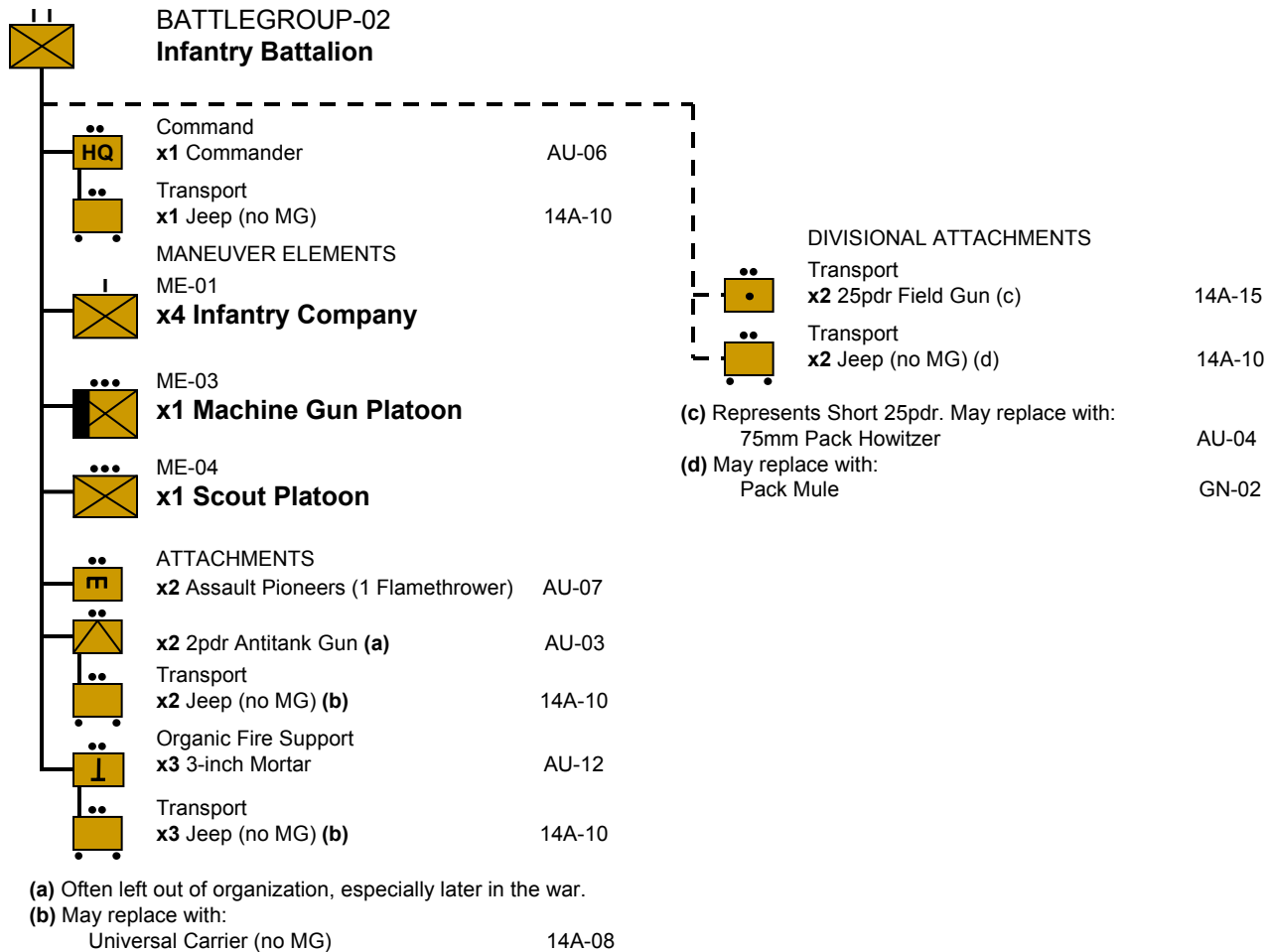


# Australian “Jungle” Division 1943 to 1945

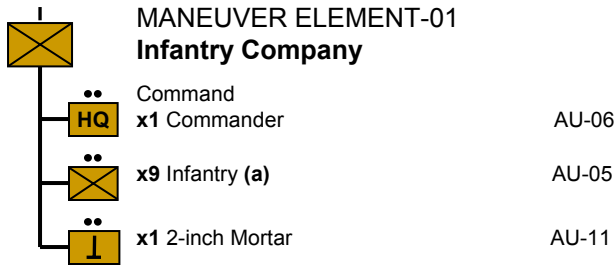


(a) Serves as Guard Company for brigade headquarters.

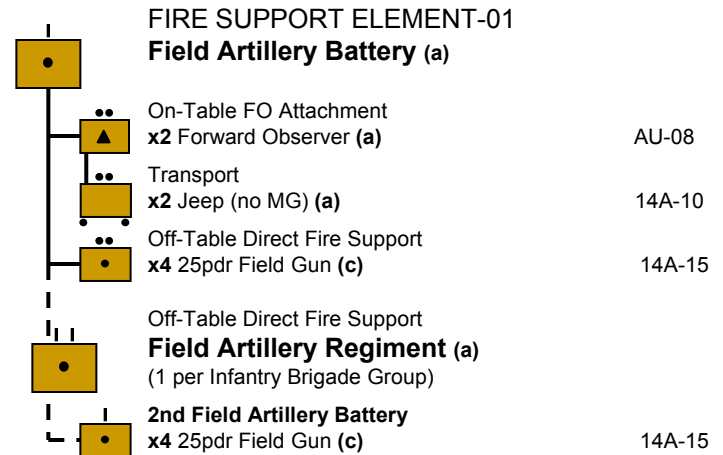
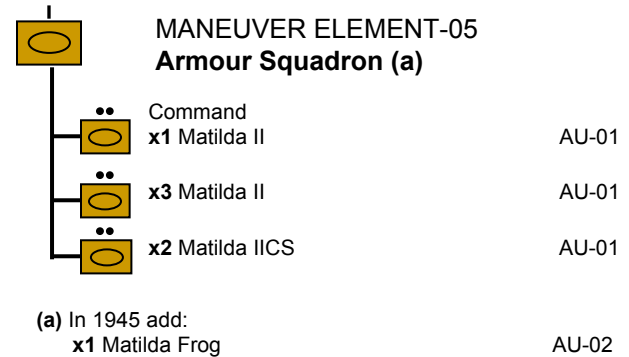
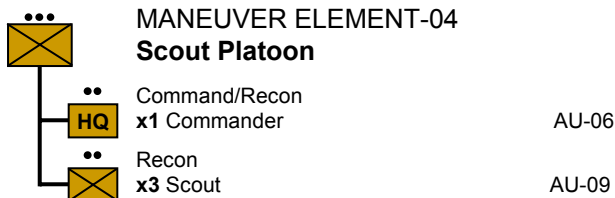
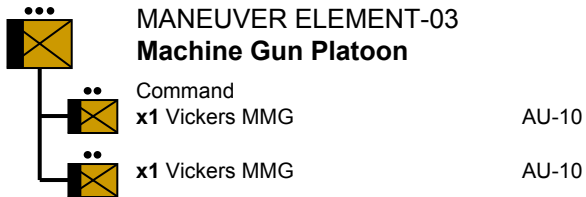
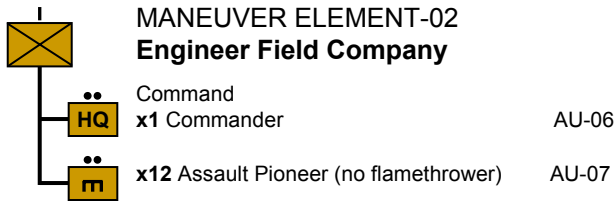
# Australian “Jungle” Division 1943 to 1945



# Australian "Jungle" Division 1943 to 1945



(a) up to 1 with PIAT



(a) Each infantry battlegroup has two FOs directly attached to it for each battery. The battery may be called as Direct Fire Support by either FO, or alternatively by Infantry Battalion/Company Commanders. Australian artillery may also fire by Troop (i.e. a half-battery of two guns). Each FO may call for a single Field Artillery Troop as Organic Fire Support.